

## List of Parts for Screw Compressor VMY 447 H and VMY 447 M Model 1994

### Relevant drawing: 0664-710

Unless otherwise stated, all measurements are in mm.)

Pos.	Designation	Qty per comp.		Used w/pos.	Part No.
		H	M		
2 H	Rotor housing, VMY 447 H	1			
2 M	Rotor housing, VMY 447 M		1		
5	Slide stop	1	1	2	1521-084
7 H	Regulating slide, VMY 447 H	1		2	1521-085
7 M	Regulating slide, VMY 447 M		1	2	1521-086
8	Guide for slide	2	2	7	1521-130
9	Spacer	2	2	8	
10	Socket cap screw M10 x 35	2	2	9	1413-373
11 *	Cover for slide stop	1	1		3013-122
12	Cover for suction strainer	2	2		
13	Discharge housing	1	1		
14	Suction side housing	1	1		
15	Cover for regulating cylinder	1	1		
16 H	End cover at discharge end, VMY 447 H	1			
16 M	End cover at discharge end, VMY 447 M		1		
18	Suction filter	2	2		1517-024
19	Filter bag	2	2		1517-031
20 H	Rotor set, VMY 447 H	1			
20 M	Rotor set, VMY 447 M		1		
23	Segment	1	1		
24	Socket cap screw M12 x 25	3	3	23	1413-385
26	Main bearing bushing	4	4	20	1515-006
26	Main bearing, bushing for repair (1.0 mm undersize)	4	4	20	1515-012
27	Balance piston	1	1	20	1521-138
28	Sleeve for balance piston	1	1	27	1521-079
30	Cover for female rotor	1	1		
31	Spacer	2	2	20	1521-139
32	Intermediate piece (outer and inner)	2	2	35	1521-140
35	Compl. axial bearing with retaining ring - outer	2	2	20	3021-033
38	Compl. axial bearing with retaining ring - inner	2	2	20	3021-034
41	Pin for spring	24	24	60	1521-013
42	Cover for shaft seal	1	1		
43	Retainer ring	1	1	28	1521-094
44	Spacer bushing	1	1	21	1521-141
45	Sleeve for spindle	2	2	46,51	1521-136

Pos.	Designation	Qty per comp.		Used w/pos.	Part No.
		H	M		
46	Bushing for slide stop	1	1	48	
47	Threaded plug G 1/2"	1	1	46	
48	Piston for slide stop	1	1	5	1521-092
49 H	Guide piston, VMY 447 H	1		5	1521-091
49 M	Guide piston, VMY 447 M		1	5	1521-090
50	Washer for piston	1	1	49	1521-089
51	Piston rod, VMY 447	1	1	7	1521-088
54	Piston, outer collar	1	1	51,55	1521-142
55	Piston, inner collar	1	1	51,54	
56 H	Guide tube, VMY 447 H	1		49	1521-110
56 M	Guide tube, VMY 447 M		1	49	1521-109
57	Spacer	1	1	48	1521-099
58	Socket cap screw M6 x 8	1	1	48	1413-230
59	Strainer	1	1	13	
60	Spring	16	16	12	1521-012
61	Cover for ECO and HLI port	3	3	2	
62	Filler piece for ECO	1	1	2	1521-098
65	Oil nipple	2	2	32	
66	Axial bearing retainer	2	2	20	1521-097
70	Guide ring for piston rod	1	1	16	1521-133
71	Cover ring	1	1	16	
86	Slotted Nut for hookspanner KM 11	2	2	51	1514-015
91	Spring dowel sleeve dia. 6 x 14	1	1	42	1446-002
95	Spring dowel sleeve dia. 5 x 10	1	1	42	1446-007
96	Adjusting washer dia. 44/25 x 5	4	4	32	1521-123
97	Adjusting washer dia. 44/25 x 6	4	4	32	1521-124
98	Adjusting washer dia. 44/25 x 1 (laminated)	4	4	32	1521-125
99	Socket cap screw M16 x 50	8	8	15	1413-434
100	Stud bolt M20 x 260	18	18	13,16	1414-269
101	Hexagon head screw M16 x 70	4	4	2,8	1424-262
104	Hexagon head screw M12 x 80	2	2	48	1424-062
105	Hexagon head screw M16 x 45	6	6	61	1424-102
108	Socket cap screw M20 x 180	3	3	13	1413-441
109	Socket cap screw M24 x 80	4	4	32	1413-442
110	Socket cap screw M16 x 40	28	28	11,49,66	1413-432
111	Socket cap screw M8 x 16	2	2	16,71	1413-026
112	Threaded pin M10 x 16	1	1	20	1413-254
113	PTFE/Carbon band 10 x 1.5 x dia. 63 (I)	1	1	70	2132-091
114	Stud bolt M10 x 30	5	5	32,54,55	1414-248
115	PTFE/Carbon band 10 x 1.5 x dia. 230 (O)	1	1	54	2132-094
116	PTFE/Carbon band 10 x 1.5 x dia. 190 (O)	1	1	48	2132-093
117	PTFE/Carbon band 10 x 1.5 x dia. 45 (O)	1	1	49	2132-089
118	Turcon-Glyd ring dia. 63 (I)	1	1	70	1332-096

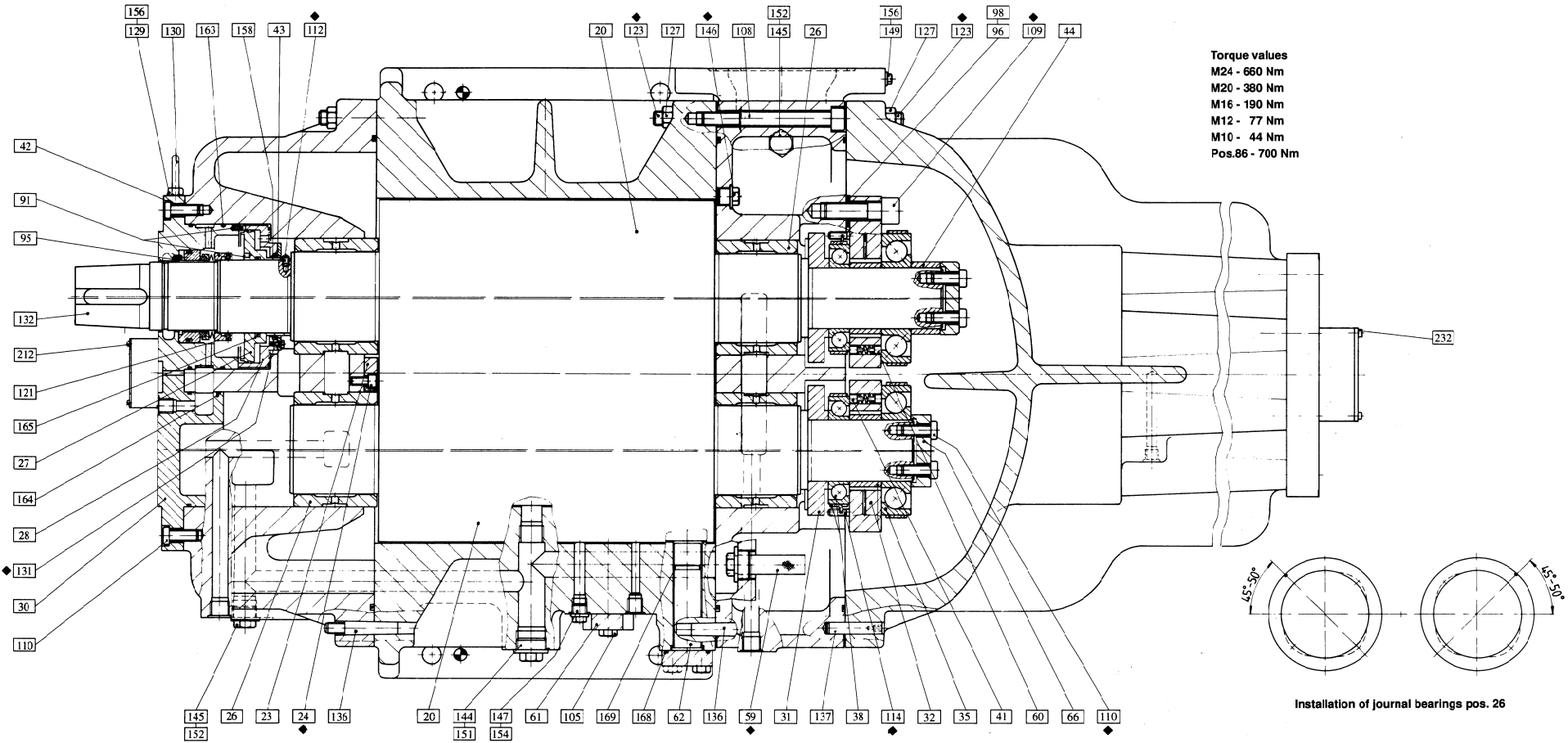
Pos.	Designation	Qty per comp.		Used w/pos.	Part No.
		H	M		
119	Sealing ring for piston	1	1	55	1332-136
120	Sealing ring for piston	1	1	42	1332-137
121	Shaft seal complete	1	1	20	1332-181
122	Conical pin A8 x 40 DIN7978	4	4	9	1445-001
123	Stud bolt M20 x 80	28	28	13,14,16	1414-263
124	Hexagon head screw M20 x 50	3	3	7,51	1424-287
125	Socket cap screw M10 x 30	4	4	5,49	1413-372
126	Hexagon nut M10	3	3	114	1432-064
127	Hexagon nut M20	46	46	100,123	1432-068
129	Screwed connection	1	1	42	1349-051
130	Pipe 10 x 1 x 135	1	1	129	
131	Hexagon head screw M5 x 12	4	4	43	1424-141
132	Key A22 x 14 x 90	1	1	20	1526-045
133	Ring screw M30	1	1	14	1427-160
136	Conical pin 16 x 100 DIN 258	4	4	13,14	
137	Conical pin A16 x 80 DIN EN 28735	2	2	13,16	
138	Conical pin 16 x 85 DIN EN 28737	1	1	2,13	
140	Threaded plug R 3/4"	1	1	14	1343-028
141	Threaded plug G 1/2"	1	1	13	1343-027
142	Threaded plug M10 x 1	4	4	32	
144	Threaded plug G 1 1/4"	2	2	2	
145	Threaded plug G 1"	2	2	13,14	
146	Threaded plug G 3/4"	4	4	2,13	
147	Threaded plug G 1/2"	1	1	2	
148	Threaded plug G 3/8"	1	1	11	
149	Threaded plug G 1/4"	6	6	2,13,15	
151	Gasket dia. 49/42 x 1.5	2	2	144	2356-148
152	Gasket dia. 39/33 x 1.5	2	2	145	2356-299
154	Gasket dia. 26/21 x 1.5	2	2	141,147	2356-300
155	Gasket dia. 23/17 x 1.5	1	1	148	2356-301
156	Gasket dia. 18/14 x 1.5	7	7	129,141	2356-302
157	Sealing ring, Turcon dia. 60 (O)	1	1	49	1332-102
158	Sealing ring, Turcon dia. 110 (I)	1	1	28	1332-103
159	O-ring 800 x 6	1	1	14	1331-231
160	O-ring 648 x 6	2	2	13	1331-230
161	O-ring 234.5 x 3.5	1	1	15	1331-111

Pos.	Designation	Qty per comp.		Used w/pos.	Part No.
		H	M		
162	O-ring 209.1 x 3.5	2	2	12	1331-031
163	O-ring 183.7 x 3.5	5	5	11,28,42	1331-104
164	O-ring 151.9 x 3.5	2	2	30	1331-099
165	O-ring 97.7 x 5.3	1	1	27	1331-047
166	O-ring 88.5 x 3.5	1	1	70	1331-079
167	O-ring 40.8 x 3.5	1	1	47	1331-064
168	O-ring 53,57 x 3.53	3	3	61	1331-068
169	O-ring 28.17 x 3.5	2	2	62	1331-024
170	O-ring 10 x 3	2	2	65	1331-247
171	O-ring 340 x 3.5	1	1	16	1331-118
172	O-ring 69.2 x 5.3	1	1	118	1331-041
173	O-ring 63 x 3.5	1	1	56	1331-071
200	Spindle for slide stop	1	1	11	1526-016
201	Housing for slide stop indicator	1	1	11	
202	Driving ring	1	1	200	
203	Cover for indicator housing	1	1	201	
204	Ball bearing 6204	2	2	200,220	1511-014
205	Sealing ring Turcon dia. 16 (I)	2	2	200,220	1332-160
206	Circlip for bore 47 x 1.75	2	2	11,15	1437-153
207	Circlip for shaft 20 x 1.2	2	2	200,220	1437-212
208	Circlip for shaft 16 x 1	2	2	200,220	1437-226
209	Socket cap screw M5 x 12	2	2	200,220	1413-328
210	Washer A6.4	2	2	209	1436-002
211	Socket cap screw M8 x 16	9	9	201,221	1413-355
212	Socket cap screw M3 x 6	4	4	203	1412-401
213	O-ring 37.7 x 3.5	2	2	201,222	1331-030
214	Cylindrical pin dia. 6M6 x 14 DIN EN 28734	2	2	57	
220	Spindle for regulating slide	1	1	15	1526-018
221	Housing for indicator	1	1	15	
222	Cover for indicator housing	1	1	15	
223	Eccentric bushing	1	1	220	
224	Retaining ring	1	1	221	
225	Indicator disc	1	1	220	
226	Adhesive marking	1	1	225	
227	Glass for indicator	1	1	221	1226-007
228	Plug	7	7	221	
229	Pointed screw M6 x 12	8	8	221,223	
230	O-ring for indicator glass	1	1	227	
231	Socket cap screw M6 x 45	2	2	15,221	1413-346
232	Socket cap screw M6 x 12	2	2	224	1413-339

Pos.	Designation	Qty per comp.		Used w/pos.	Part No.
		H	M		
	<b>With manual adjustment of V<sub>i</sub> regulation</b>				
	See drawing no. 0664-710, page 2				
250	Spindle arrangement, complete				3044-025
251	Cover	1	1		
252	Flange with thread	1	1	48	
253	Spindle	1	1	252	
254	Threaded spindle	1	1	253	
255	Nut for indicator	1	1	254	
257	Piece for indicator	1	1	255	
258	Socket cap screw M6 x 16	1	1	257,255	1413-340
259	Socket cap screw M12 x 30	1	1	252,48	1413-386
260	Hexagon nut M16	1	1	254	1432-067
261	Washer dia. 30/17 x 3	1	1	254	1436-038
262	Circlip for bore dia. 62 x 2 DIN 472	1	1	251	1437-156
263	Sealing ring Turcon dia. 28	1	1	251,253	1332-105
264	Spring dowel sleeve dia. 5 x 36	1	1	253,254	1446-006
265	Bushing	1	1	251	
266	O-ring dia. 183.7 x 3.5	1	1	251	1331-104

The following position numbers are substituted or excluded when the compressor is fitted with **manual** V<sub>i</sub> regulation.

Pos.	Designation	Qty per comp.		Used w/pos.	Part No.
		H	M		
11	Cover for slide stop				
45	Sleeve for spindle				
148	Threaded plug G3/8"				
155	Gasket AL dia. 23/17 x 1.5				
200- 214	Spindle for slide stop, all parts (incl. pos. 11)				3044-046

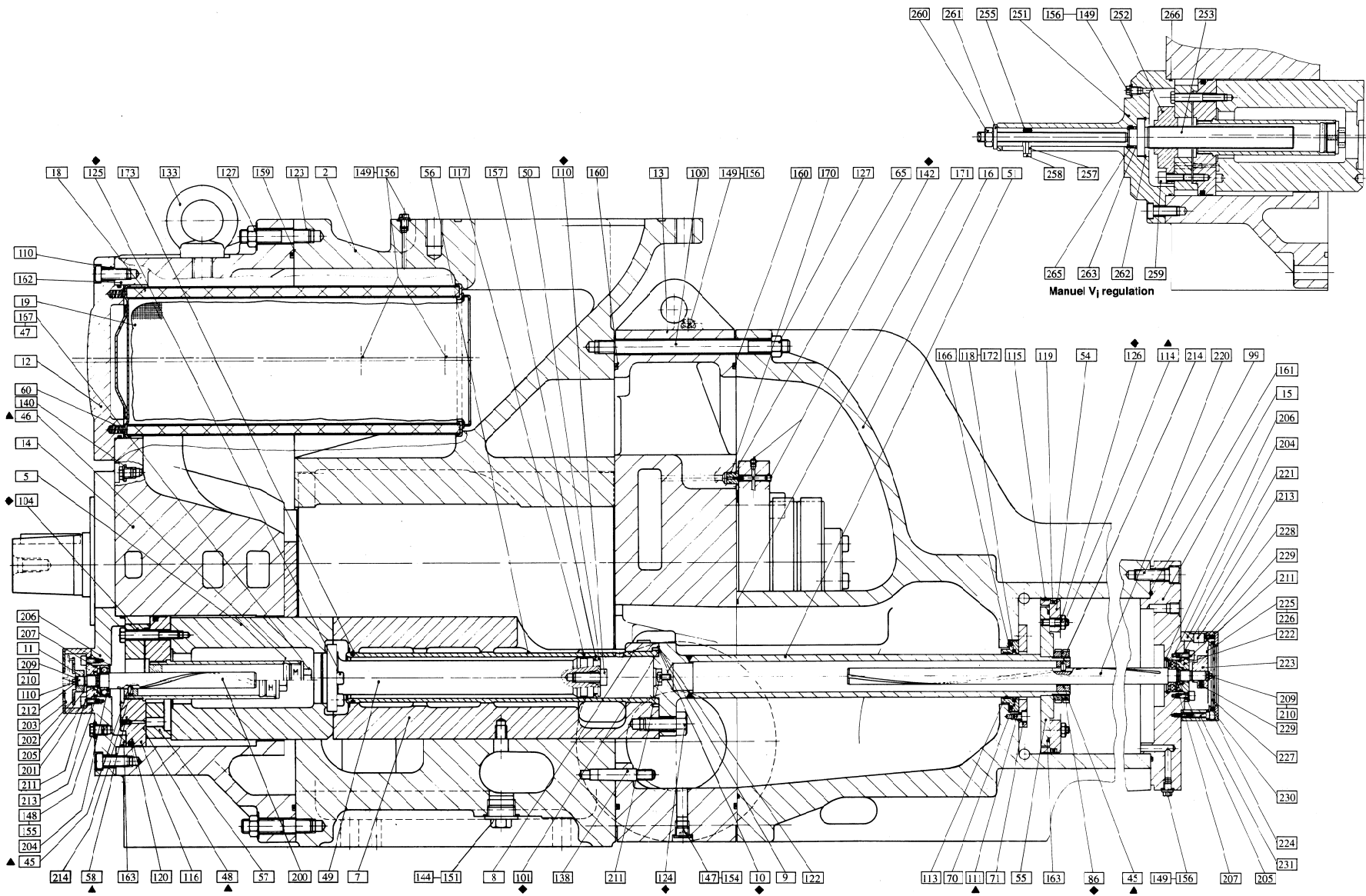


# VMY 447

Model 1994  
 (OZV 2525)  
 List of parts 0664-711

◆ Screws to be locked by loctite 243 (or equivalent)

▲ Screws to be sealed and locked by loctite 586 (or equivalent)



# VMY 447

Model 1994  
(OZV 2525)

## Spare Parts survey VMY 447 Model 1994 (unit)

The position numbers stated below refer to the piping diagram covering your specification. The unit comprises various components and equipment which have been selected to meet specific requirements. The spare parts set supplied has been tailored to suit the unit by SABROE. The components in

the shaded areas are variable, depending on the voltage, refrigerant, approved pressure etc.

When you order individual spare parts, please state the type of unit involved.

**Standard spare parts set:           A**

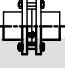
**Certificate spare parts set:        B**

	Pos.	Designation	Part no.	R22		R717	
				A	B	A	B
Regulating and control devices - PROSAB II/UNISAB/UNISAB II	<b>Units with PROSAB II / UNISAB</b>						
	PT1	Pressure transducer	0-200 PSIG	1373-242	1		1
	PT2	Pressure transducer	0-500 PSIG	1373-243	2		2
	PT3	See PT2					
	PT4	See PT2	(only PROSAB II)				
	TT5	Temperature transducer	PT100	1373-252	1		1
	TT6	Temperature transducer	PT100	1373-252			
	TT7	Temperature transducer	PT100	1373-252			
	GT8	Positionstransmitter, capacity slide		3145-032			
	GT9	Position transmitter, V <sub>i</sub> slide stop		3145-032			
	FT18	See pos. 105					
	<b>Units with UNISAB II</b>						
	PT1	Pressure transducer	-1 to 9 bar	1373-249	1		1
	PT2	Pressure transducer	-1 to 25 bar	1373-250	2		2
	PT3	See PT2					
	PT4	See PT2					
	TT5	Temperature transducer	PT100	1373-252	1		1
	TT6	Temperature transducer	PT100	1373-252			
	TT7	Temperature transducer	PT100	1373-252			
GT8	Positionstransmitter, capacity slide		3145-032		1	1	
GT9	Position transmitter, V <sub>i</sub> slide stop		3145-032		1	1	
FT18	See pos. 105						



	Pos.	Designation	Part no.	R22		R717	
				A	B	A	B
Regulating and control devices - relay control	<b>Units with instrument and electric panel</b>						
	1	Thermostat - discharge gas temp. (for oil cooler type OWSG, OOSI, OKS) KP81	1373-014		1		1
	1	Thermostat - discharge gas temp. (for HLI and BLI oil cooling) KP79	1373-013		1		1
	2	Thermostat - in discharge gas pipe (for activating solenoid valve in HLI and BLI oil cooling systems) KP77	1373-009		1		1
	3	Thermostat - oil temp at compr. inlet KP79	1373-013		1		1
	4	Thermometer, oil inlet 0/100°C	1543-066		1		1
	5	Differential switch (oil filter) RT260A	1373-210		1		1
	6	Low-pressure switch KP1 (R22)	1373-103		1		
	6	Low-pressure switch KP1A (R717)	1373-113				1
	7	Thermometer, suction gas -40/+50°C	1543-065		1		1
	GT8	Position transmitter, capacity slide	3145-032		1		1
	8	Suction pressure gauge (R22)	1541-298		1		
	8	Suction pressure gauge (R717)	1541-090				1
	9	Differential switch (oil pressure) MP55 (R22)	1375-159		1		
	9	Differential switch (oil pressure) MP55A (R717)	1373-162				1
	10	Differential switch (oil pump pressure) (w/oil pump) MP55 (R22)	1373-119		1		
	10	Differential switch (oil pump pressure) (w/oil pump) MP55A (R717)	1373-146				1
	11	High-pressure switch KP5 (R22)	1375-123		1		
	11	High-pressure switch KP5A (R717)	1375-125				1
	12	Thermometer, discharge gas (See pos. 4)					
	13	High-pressure switch MP55 (R22)	1373-159		1		
	13	High-pressure switch MP55A (R717)	1373-162				1
	13	Discharge pressure/oil pressure gauge (w/oil pump) (R22)	1541-329		1		
	13	Discharge pressure/oil pressure gauge (w/oil pump) (R717)	1541-117				1
	14	Discharge pressure gauge (R22)	1541-299		1		
	14	Discharge pressure gauge (R717)	1541-091				1
	16	Dual high-pressure switch KP7 BS-TÜV (R22)	1373-128		1		
	16	Dual high-pressure switch KP7 ABS-TÜV (R717)	1373-127				1
	FT18	See pos. 105					
		Relay	1553-012	2	2	2	2
		Socket (11 pole)	1554-002	3	3	3	3
		Delaying relay	1553-125	1	1	1	1

	Pos.	Designation	Part no.	R22		R717		
				A	B	A	B	
<b>Coupling</b>		<b>Spare parts for the coupling</b>						
		Spare parts for coupling 312	1524-126		1		1	
		Spare parts for coupling 350	1524-127		1		1	
		Spare parts for coupling 375	1524-128		1		1	
<b>Refrigerant system</b>	20	<b>Stop check valve</b>						
		Stop check valve SCH200 (R22)	2411-564					
		Complete set of gaskets	3184-116			1	1	
	20-2	<b>Stop valve</b>						
		Stop valve SCV250 (R22)	2411-547					
		Complete set of gaskets	3184-108	1	1			
	20-3	<b>Non-return valve</b>						
		Non-return valve BB15 (R22)	2415-424					
	21	<b>Suction filter</b>	(See compr. spare parts)					
		Suction filter (with compressor) Filter bag for run-in period	1517-031		2		2	
	22	<b>Gasket for discharge pipe flange</b>	2356-225	1	1	1	1	
	23	<b>Oil separator (general)</b>						
		O-ring for cover on oil separator OVUR 80/100/122/142xx	1331-188	1	1	1	1	
		Separator element (N-type)	1517-061		1		1	
		Separator element (S-type)	1517-079		1		1	
		O-ring for separator element O-ring for element cover	1331-204 1331-019	2(4) 1(2)	2(4) 1(2)	2(4) 1(2)	2(4) 1(2)	
	24	Sight glass	1226-015		2		2	
		O-ring	1331-140	2	2	2	2	
	25	<b>Heating rod</b>						
		Heating rod 460W 250V	3181-038		1		1	
Heating rod 460W 230V		3181-040		1		1		
Heating rod 460W 115V		3181-039		1		1		
	Sealing ring dia. 42/49 x 6,5	1349-213	2	2	2	2		
26	<b>Stop valve SVA15</b>	2412-317						
	Complete set of gaskets	2453-022	1	1	1	1		
27	<b>Gasket for suction side flange</b>	2356-229	1	1	1	1		

	Pos.	Designation	Part no.	R22		R717		
				A	B	A	B	
Refrigerant system (cont.)	28	<b>Stop check valve</b>						
		Stop check valve SCH125 (R717)	2411-562					
		Complete set of gaskets	3184-115			1	1	
		Stop check valve SCH200 (R22)	2411-564					
			Complete set of gaskets	3184-116	1	1		
	29	<b>Stop valve SVA15</b>		2413-126				
		Complete set of gaskets See pos. 26		2453-022				
		Gasket dia. 34/27		2356-140	1	1	1	1
	30	<b>Safety valve SFV15, 25 bar</b>		2416-182				
		SFV15, 22 bar (TÜV)		2416-190				
		SFV15, 20 bar		2416-191				
		SFV15, 18 bar		2416-148				
	31-1	<b>Bursting disc type RB-7R</b> 						
		DN65, 18,5 bar (R717)		1377-289				6
		DN65, 15 bar (R717)		1377-308				6
		Gasket for bursting disc retainer		2356-222			3	15
		DN80, 18,5 bar (R22)		1377-328		6		
		DN80, 15 bar (R22)		1377-309		6		
			Gasket for bursting disc retainer	2356-224	3	15		
	31-2	<b>Safety valve</b>						
		Safety valve DN65, 18 bar (R717)		1364-068				
		Spring		1523-006				1
		O-ring		1331-099				1
		Gasket for inlet flange		2356-222			3	4
			Gasket for outlet flange	2356-224			1	2
	32	<b>Gasket for relief line flange</b>		2356-224	1	1	1	1
	33	<b>Three-way valve DSV15</b>		2413-116				
	41	<b>Stop valve SVA10</b>		2412-316				
Complete set of gaskets			2453-016	1	1	1	1	
42	<b>Non return valve R210L 0.2 bar</b>		1364-164					
43	<b>Nozzle 1 mm.</b>		3043-022					
44	<b>Stop return SVA 10</b>		2412-316					
	Complete set of gaskets		2453-016					

	Pos.	Designation	Part no.	R22		R717	
				A	B	A	B
Oil system	50	<b>Stop valve SVA20</b> Complete set of gaskets	2412-311 2453-022	1	1	1	1
	51	<b>Stop valve SVA15</b> Complete set of gaskets	2413-134 2453-022				
		See pos. 26					
	52	<b>Oil filter FA20</b> Gasket set Repair kit	1375-170 1377-079 1377-251	1	1 1	1	1 1
	53	<b>Pre-lubr. oil pump R25/12.5</b> Shaft seal for oil pump	1524-123 1332-154	1	1	1	1
	54	<b>Stop valve SVA15</b> Complete set of gaskets	2413-134 2453-022				
		See pos. 26					
	55	<b>Stop valve SVA20</b> Complete set of gaskets	2412-311 2453-022				
		See pos. 50					
	56	<b>Non-return valve RD28-L, 3 bar</b> (units without main oil pump)	1364-023		1		1
	57	<b>Non-return valve NRVA50</b> (units without main oil pump) Gasket set Piston for non-return valve	1372-251 1377-064 1377-001	1	1 1	1	1 1
	58	<b>Non-return valve RD22-L, 1 bar</b>	1364-139		1		1
	60	<b>Stop valve SVA15</b> Complete set of gaskets	2412-317 2453-022				
		See pos. 26					
	61	<b>Oil filter FA15</b> Gasket set Repair set	1375-150 1377-078 1377-250	1	1 1	1	1 1
62	<b>Nozzle for oil return</b>	3142-021		1		1	
63	<b>Oil sight glass</b> Gasket dia. 40.5/33 x 1.5	1226-014 2356-144	1	1 1	1	1 1	
64	<b>Stop valve SVA15</b> Complete set of gaskets	2412-317 2453-022					
	See pos. 26						

	Pos.	Designation	Part no.	R22		R717	
				A	B	A	B
Compressor regulation system	70	<b>Solenoid valve EVM</b>	1372-335		2		2
		Gasket set	1336-024	4	4	4	4
		Coil 10W, 110V, 50/60Hz	1372-331		2		2
		Coil 10W, 220V, 50/60Hz	1372-330		2		2
		Coil 10W, 240V, 60Hz	1372-329		2		2
		Coil 10W, 250V, 50Hz	1372-334		2		2
	71	<b>Solenoid valve EVM</b> See pos. 70	1372-335				
	72	<b>Solenoid valve EVM</b> See pos. 70	1372-335				
	73	<b>Solenoid valve EVM</b> See pos. 70	1372-335				
	74	<b>Throttle valve, DN6</b>	1364-151				
	75	<b>Throttle valve, DN6</b>	1364-151				
	76	<b>Three-way valve WV12</b>	1364-084				
	80	<b>Solenoid valve EVM</b> (for PROSAB II/UNISAB S/UNISAB II) See pos. 70	1372-335				
	81	<b>Solenoid valve EVM (NO)</b> (for PROSAB II/UNISAB II)	1372-337				
	Gasket set	1336-024					
	Coil 12W, 220V, 50Hz	1372-324					
	Coil 12W, 240V, 50Hz	1372-325					
	Coil 12W, 110V, 50Hz	1372-326					
	Coil 12W, 110V, 60Hz	1372-327					
	Coil 12W, 220V, 60Hz	1372-328					
	82	<b>Throttle valve DN 6</b>	1364-151				
	83	<b>Throttle valve DN 6</b>	1364-151				
Oil pump system	90	<b>Stop valve SCV50</b>	2411-278				
		Complete set of gaskets (See pos. 101)	3184-077				
	91	<b>Oil strainer</b> (units with oil pump)	4524-019				
		Wire mesh insert	3425-103				
		O-ring for cover	1331-083	1	1	1	1
O-ring dia. 105/85 x 10		3126-016	1	1	1	1	
	O-ring for insert	1331-075	1	1	1	1	
92	<b>Oil pump</b> SNF80 R46 (units with oil pump)	1524-090					
	Shaft seal	1332-155	1	1	1	1	
	Gasket for flange	2356-221	2	2	2	2	

	Pos.	Designation	Part no.	R22		R717	
				A	B	A	B
Cont.	93	<b>Oil pressure regulating valve</b> (units with oil pump) O-ring dia. 59.9 x 3.5 Gasket for flange	1364-071 1331-070 2356-221	1 2	1 2	1 2	1 2
	94	<b>Non-return valve NRVA50</b> (units with oil pump - not for units with instr. panel) Gasket set see pos. 57 Piston for non-return valve	1372-251 1377-064 1377-001				
Oil conditioning system	100	<b>Oil filter complete</b> Filter element, fibreglass cc25 O-ring for cover SOR 83 O-ring for insert arrangement, R208 O-ring for filter element, SOR34 O-ring for flange	1517-056 1517-015 1331-226 1331-169 1331-225 1331-077	3 1 1 1 2	3 1 1 1 2	3 1 1 1 2	3 1 1 1 2
	101	<b>Stop valve SCV50</b> Complete set of gaskets	2411-278 3184-077	1	1	1	1
	102	<b>Stop valve SCV50</b> Complete set of gaskets See pos. 101	2411-278 3184-077				
	103	<b>Stop valve SVA6</b> Complete set of gaskets See pos. 43	2413-123 2453-016				
	105	<b>Flow switch with ball</b> Terminal box Nippel for flow switch Washer dia. 24/13 x 2.5 A1 ring dia. 32/27 x 1.5 A1 ring dia. 24/18 A1 ring dia. 19/14 x 1.5 Steel ring dia. 13/8 O-ring for covers	1553-024 1554-001 2314-080 1436-036 2356-139 2356-128 2356-124 2351-028 1331-081	2	1 1 2	2	1 1 2
Oil cooling system, heat exchanger	110	<b>Oil cooler, water-cooled</b> Oil cooler OWSG/OWCG 2119xx					
		Complete set of gaskets Gasket for end cover Gasket for flange O-ring for corrosion plug Gasket for drain plug	3084-162 2355-172 2356-269 1331-028 2356-141	1	1	1	1
		Oil cooler OWSG/OWCG 2123xx					
		Complete set of gaskets Gasket for end cover Gasket for flange O-ring for corrosion plug Gasket for drain plug	3084-162 2355-172 2356-269 1331-028 2356-141	1	1	1	1

	Pos.	Designation	Part no.	R22		R717	
				A	B	A	B
Oil cooling system, heat exchanger (cont.)		Oil cooler OWSG/OWCG 2719xx					
		Complete set of gaskets	3084-221	1	1	1	1
		Gasket for end cover	2355-173				
		Gasket for flange	2356-276				
		O-ring for corrosion plug	1331-028				
		Gasket for drain plug	2356-141				
		Oil cooler OWSG/OWCG 2723xx					
		Complete set of gaskets	3084-221	1	1	1	1
		Gasket for end cover	2355-173				
		Gasket for flange	2356-276				
		O-ring for corrosion plug	1331-028				
		Gasket for drain plug	2356-141				
		Oil cooler OWSG/OWCG 3219xx					
		Complete set of gaskets	3084-222	1	1	1	1
		Gasket for end cover	2355-174				
		Gasket for flange	2356-277				
		O-ring for corrosion plug	1331-028				
		Gasket for drain plug	2356-141				
		Oil cooler OWSG/OWCG 3223xx					
		Complete set of gaskets	3084-222	1	1	1	1
		Gasket for end cover	2355-174				
		Gasket for flange	2356-277				
		O-ring for corrosion plug	1331-028				
		Gasket for drain plug	2356-141				
		Oil cooler OWSG/OWCG 4119xx					
		Complete set of gaskets	3084-223	1	1	1	1
		Gasket for end cover	2355-175				
		Gasket for flange	2356-278				
	O-ring for corrosion plug	1331-028					
	Gasket for drain plug	2356-141					
	111	<b>Stop valve SVA15</b>	2413-134				
		Complete set of gaskets See pos. 26	2453-022				
	112	<b>Oil Cooler, refrigerant-cooled</b>					
		Oil cooler OOSI, 2114xx					
		Oil cooler OOSI, 2714xx					
		Oil cooler OOSI, 3214xx					
		Oil cooler OOSI, 4114xx					
	113	<b>Stop valve SVA15</b>	2413-134				
		Complete set of gaskets See pos. 26	2453-022				

	Pos.	Designation	Part no.	R22		R717	
				A	B	A	B
Oil cooling system HLI/BLI	114	<b>Safety valve SVF15, 25 bar</b> SFV15, 22 bar SFV15, 20 bar SFV15, 18 bar	2416-182 2416-190 2416-191 2416-148				
	115	<b>Thermostatic 3-way valve</b> Thermostatic element 49°C (120°F) Gasket set for thermostatic valve Gasket for flange	1375-034 1365-059 1365-063 2356-221	1 1 3	1 1 3	1 1 3	1 1 3
	116	<b>Three-way valve DSV15</b>	2413-116				
	118	<b>Stop valve SVA15</b> Complete set of gaskets See pos. 26	2413-134 2453-022				
	120.1	<b>Stop valve SVA20</b> (BLI, R717) Complete set of gaskets	2412-318 2453-022			1	1
	120.2	<b>Stop valve SVA25</b> (HLI, R717 - HLI/BLI, R22) Complete set of gaskets	2412-319 2453-025	1	1	(1)	(1)
	121.1	<b>Filter FA20</b> (BLI, R717) Gasket set Repair set	1375-161 1377-079 1377-251	1 1	1 1	1 1	1 1
	121.2	<b>Filter FA20</b> (PMFL 80-3/80-4/80-5) Gasket Repair set	1377-079 1377-196	1	1 1	1	1 1
	121.2	<b>Filter FA25</b> (PMFL 80-6/80-7) Gasket set Repair set	1375-156 1377-197 1377-196	1	1 1		
	122.1	<b>Injection valve TEAT 85</b> (BLI, R717) Orifice insert 33TR Orifice insert 55TR Orifice insert 85TR Thermostatic element (35-65°C) Thermostatic element (55-95°C) Gasket for flange	1371-207 1371-208 1371-209 1371-257 1371-256 2356-258				1 1 1 1 1 5
	122.2	<b>Injection valve TEAT 20</b> Orifice insert 20-8 TR Thermostatic element (35-65°C) Thermostatic element (55-95°C) Gasket for flange	1371-203 1371-255 1371-253 1993-017	2	1 1 1 2		(1) (1) (1) (2)



	Pos.	Designation	Part no.	R22		R717		
				A	B	A	B	
Oil cooling system HLI/BLI(cont.)	123.1	<b>Solenoid valve EVRA20</b> (BLI, R717)	1372-348					
		Gasket set	1377-094			1	1	
		Repair set	1377-069				1	
		Coil 10W, 100V, 50/60Hz	1372-331				1	
		Coil 10W, 220V, 50/60Hz	1372-330				1	
		Coil 10W, 240V, 60Hz	1372-329				1	
		Coil 10W, 250V, 50Hz	1372-334				1	
	123.2	<b>Solenoid valve EVM</b>	1372-335		1		(1)	
		Gasket set	1336-024	1	1	(1)	(1)	
		Coil 10W, 110V, 50/60Hz	1372-331		1		(1)	
		Coil 10W, 220V, 50/60Hz	1372-330		1		(1)	
		Coil 10W, 240V, 60Hz	1372-329		1		(1)	
		Coil 10W, 250V, 50Hz	1372-334		1		(1)	
	124.2	<b>Main valve PMFL80</b>						
		Gasket set	1377-040	1	1	(1)	(1)	
		Valve spindle with servo piston 80-3	1377-085		1		(1)	
		Valve spindle with servo piston 80-4	1377-086		1		(1)	
		Valve spindle with servo piston 80-5	1377-087		1		(1)	
		Valve spindle with servo piston 80-6	1377-088		1			
		Valve spindle with servo piston 80-7	1377-089		1			
	125.1	<b>Stop valve SVA25</b> (BLI, R717)	2412-319					
		Complete set of gaskets	2453-025			1	1	
	125.2	<b>Stop valve SVA32</b> (PMFL 80-3/80-4/80-5)	2412-320					
Complete set of gaskets		2453-025	1	1	(1)	(1)		
125.2	<b>Stop valve SVA40</b> (PMFL 80-6/80-7)	2412-321						
	Complete set of gaskets	2453-025	1	1				
Compressor oil connections	130	<b>Pipe connection A 22-RL</b>	1349-131					
	131	<b>Pipe connection A 22-RL</b>	1349-131					
	132	<b>Pipe connection A 18-RL</b>	1349-130					
	133	<b>Nozzle</b> dia. 5 (Booster, R22/R717)	3142-052		1		1	
		<b>Nozzle</b> dia. 7 (R22)	3142-062		1			
		<b>Nozzle</b> dia. 11.5 (R717)	3142-091				1	
	134	<b>Pipe connection A 12-RL</b>	1349-053					
	135	<b>Pipe connection A 12-RL</b>	1349-053					
	136	<b>Pipe connection SB 12-RL</b>	1349-091					
	137	<b>Pipe connection SB 12-RL</b>	1349-091					
138	<b>Pipe connection A 12-S</b>	1349-062						

## Spare parts sets for VMY 447 H & M compressors, model 1994

Relevant drawing 0664-710 (Please note all measurements are in mm)

Pos.	Designation	Quantity		Part no.
		V <sub>i</sub> auto.	V <sub>i</sub> man.	
	<b>Standard spare parts set no. 1 complete (V<sub>i</sub> auto.)</b>	1		3084-401
	<b>Standard spare parts set no. 1 complete (V<sub>i</sub> man.)</b>		1	3084-398
113	Teflon/carbon band 10 x 1.5 x dia. 63 (I)	1	1	2132-091
115	Teflon/carbon band 10 x 1.5 x dia. 230 (O)	1	1	2132-094
116	Teflon/carbon band 10 x 1.5 x dia. 190 (O)	1	1	2132-093
117	Teflon/carbon band 10 x 1.5 x dia. 45 (O)	1	1	2132-089
118	Turcon ring dia. 63 (I)	1	1	1332-096
119	Sealing ring, Kolpac	1	1	1332-136
120	Sealing ring, Kolpac	1	1	1332-137
151	Gasket dia. 49/42 x 1.5	2	2	2356-148
152	Gasket Al dia. 39/33 x 1.5	2	2	2356-299
154	Gasket Al dia. 26/21 x 1.5	2	2	2356-300
155	Gasket Al dia. 23/17 x 1.5	1	1	2356-301
156	Gasket Al dia. 18/14 x 1.5	7	7	2356-302
157	Turcon Vari seal -M 60 (O)	1	1	1332-102
158	Turcon vari seal -M dia. 110 (I)	1	1	1332-103
159	O-ring dia. 800 x 6	1	1	1331-231
160	O-ring dia. 648 x 6.0	2	2	1331-230
161	O-ring dia. 234.5 x 3.5	1	1	1331-111
162	O-ring dia. 209.1 x 3.5	2	2	1331-031
163	O-ring dia. 183.7 x 3.5	5	5	1331-104
164	O-ring dia. 151.9 x 3.5	2	2	1331-099
165	O-ring dia. 97.7 x 5.3	1	1	1331-047
166	O-ring dia. 88.5 x 3.5	1	1	1331-079
167	O-ring dia. 40.8 x 3.5	1	1	1331-064
168	O-ring dia. 50.4 x 3.5	3	3	1331-067
169	O-ring dia. 28.17 x 3.5	2	2	1331-024
170	O-ring dia. 10 x 3	2	2	1331-247
171	O-ring dia. 340 x 3.5	1	1	1331-118
172	O-ring dia. 69.2 x 53	1	1	1331-041
173	O-ring dia. 63 x 3.5	1	1	1331-071
205	Turcon vari seal -M 16 (I)	2	1	1332-160
213	O-ring dia. 37.7 x 3.5	2	1	1331-030
263	Turcon vari seal -M (only for manual V <sub>i</sub> )		1	1332-105

## 0664-712

Pos.	Designation	Quantity		Part no.
		V <sub>i</sub> auto.	V <sub>i</sub> man.	
	<b>Extended spare parts set no. 2 complete (V<sub>i</sub> auto.)</b>	1		3084-402
	<b>Extended spare parts set no. 2 complete (V<sub>i</sub> man.)</b>		1	3084-399
	Standard spare parts set no. 1	1		3084-401
	Standard spare parts set no. 1		1	3084-398
26	Main bearing bushing	4	4	1515-006
35	Axial bearing with retaining ring - outer	2	2	3021-033
38	Axial bearing with retaining ring - inner	2	2	3021-034
96	Adjusting washer dia. 44/25 x 5	4	4	1521-123
97	Adjusting washer dia. 44/25 x 6	4	4	1521-124
98	Adjusting washer dia. 44/25 x 1 (laminated)	4	4	1521-125
121	Shaft seal complete	1	1	1332-179
	<b>Certificate spare parts set no. 3 complete (V<sub>i</sub> auto.)</b>	1		3084-403
	<b>Certificate spare parts set no. 3 complete (V<sub>i</sub> man.)</b>		1	3084-400
	Extended spare parts set no. 2	1		3084-402
	Extended spare parts set no. 2		1	3084-399
18	Suction filter	1	1	1517-024
27	Balance piston	1	1	1521-138
28	Sleeve for balance piston	1	1	1521-079
91	Spring dowel sleeve dia. 6 x 14	2	2	1446-002
94	Spring dowel sleeve dia. 5 x 10	1	1	1446-007
100	Stud bolt M20 x 260 DIN 939	5	5	1414-269
122	Conical pin A8 x 40 DIN 7978	4	4	1445-001
123	Stud bolt M16 x 70 DIN 939	5	5	1414-263
132	Key 18 x 11 x 70 DIN 6885	1	1	1526-045
264	Spring dowel sleeve dia. 5 x 36		1	1446-006



## Tools for compressor type VMY 347

Code no. A401 = Standard set

Code no. A402 = Extended set

Code no. B401 = Tools for alignment of coupling

Pos.	Designation	Part no.	Quantity	
			Code no. A401	Code no. A402

### Mounting/dismounting of rotors and axle bearings:

1-1	Clamp for puller	kukko 18/3		1	1
1-2	Spindle for puller			1	1
2-1	Thrust washer	3183-082		1	1
3-1	Coupling piece M16-M20	3083-074		2	2
3-2	Screw M20 x 65	1424-290		2	2
3-3	Tension disc $\varnothing$ 42/21	1436-018		2	2
4-1	Hook-spanner for axle nut KM 13			1	1
5-1	Distance piece 15935-4	3083-076		1	1
6-1	Feeler gauge 0.03 - 0.10 mm			1	1

### Mounting/dismounting slide bearings:

7	Fitting tool (incl. 7-1 to 7-7)	3083-075		1	1
7-1	Puller	*		1	1
7-2	Thrust flange	*		1	1
7-3	Thrust bearing	*		1	1
7-4	Guiding bushing	*		1	1
7-5	Bushing for normal slide bearing	*		1	1
7-6	Bushing for undersized slide bearing	*		1	1
7-7	Cylinder screws M16 x 35	*		3	3

### Mounting capacity slide with piston rod:

8-1	Mounting bushing 15971-4	3083-077		1	1
9-1	Hook-spanner for axle nut KM11			1	1
10-1	Unbrako screw M12 x 130	1413-402		1	1

## Tools for compressor type VMY 447

Code no. A401 = Standard set

Code no. A402 = Extended set

Code no. B401 = Tools for alignment of coupling

Pos.	Designation	Part no.	Quantity	
			Code no. A401	Code no. A402

### Mounting/dismounting of rotors and axle bearings:

1-1	Clamp for puller	kukko 18/3	1	1
1-2	Spindle for puller		1	1
2-1	Thrust washer	3183-082	1	1
3-1	Coupling piece M20-M24	3083-088	2	2
3-2	Screw M20 x 65	1424-290	2	2
3-3	Tension disc dia. 42/21	1436-018	1	1
4-1	Hook-spanner for axle nut KM 13		1	1
6-1	Feeler gauge 0,03 - 0,10 mm		1	1

### Mounting/dismounting slide bearings:

7	Fitting tool (incl. 7-1 to 7-4 and 7-7)	3083-087	1	1
7-1	Puller	*	1	1
7-2	Thrust flange	*	1	1
7-3	Thrust bearing	*	1	1
7-4	Guiding bushing	*	1	1
7-7	Cylinder screws M24 x 60	*	3	3

### Mounting capacity slide with piston rod:

8-1	Mounting bushing 15971-4	3083-077	1	1
9-1	Hook-spanner for axle nut KM11		1	1
10-1	Unbrako screw M12 x 130	1413-402	1	1

**General tools: 3083-073**

16-1	Torque wrench 40-200 Nm			1
16-2	Ratchet 3/4" square	735/40		1
16-3	Open end spanner (fork wrench)	731/40		1
17-1	T-handle 3/4" square	065 600		1
17-2	Extension rod 3/4" square	065 607		1
18-1	Box spanner insert 19 mm 3/4"	065 698		1
18-2	Box spanner insert 24 mm 3/4"	065 702		1
18-3	Box spanner insert 30 mm 3/4"	065 708		1
18-4	Allen key insert			1
	14mm 1/2" <input type="checkbox"/>	065 501		1
18-5	Reduction 3/4"-1/2"	065 795		1
19-1	Combination spanner	13 mm	1612-268	1
19-2	"	17 mm	1612-276	1
19-3	"	30 mm		1
20-0	Hexagonal Allen key	2.5 mm	1612-393	1
20-1	"	3 mm	1612-395	1
20-2	"	4 mm	1612-396	1
20-3	"	5 mm	1612-397	1
20-4	"	6 mm	1612-398	1
20-5	"	8 mm	1612-399	1
20-6	"	10 mm	1612-401	1
20-7	"	12 mm		1
20-8	"	14 mm		1
20-9	"	17 mm		1
21-1	Locking ring pliers	531 115		1
22-1	Puller with spindle	kukko 20/10		1
23-1	Magnetic frame			1
23-2	Dial indicator			1
24-1	Hexagon head screw M8 x 55		1424-174	2

**Code no. B401 - Tools for alignment of coupling**

Pos.	Designation	Part no.	Coupling size Quantity			
			262	312	350	375
11-1	Alignment tool	3183.104	1			
	Alignment tool	3183.105		1	1	
	Alignment tool	3083.079				1
12-1	Feeler gauge	1622-050	1	1	1	1
13-1	Combination spanner 1/2"	1612-282	2	2	2	2
14-1	Square 1/2" for box spanner	1612-359	2	2	2	2
15-1	Box spanner insert (socket wrench)					
	9/16" - 1/2"	1612-332	2			
	5/8" - 1/2"	1612-333		2		
	13/16" - 1/2"	1612-334			2	
	15/16" - 1/2"	1612-335				2
25-1	Puller	3083-083	1	1	1	1